



TORRENT[®]

SEMITOOL Batch Spray System

Industry Proven SEMITOOL Spray Technology

CLEAN ■ ETCH ■ STRIP

Features

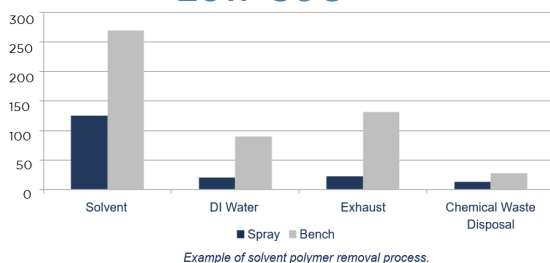
- Uniform, flexible, repeatable process
- Single/dual chamber
- 25/50 wafer batch at 200mm
- 25/50/75 wafer batch ≤150mm
- Sealed chamber for operator safety
- Chemical concentration monitoring
- Proven Enhanced Spray Technology™ (EST)
- Dry in Dry out processing
- Host communication
- High throughput
- Windows 10

Benefits

- Chemical savings with patented Ozone process
- Fab footprint reduction over wet bench
- MEMS HF Vapor spring release process
- Low exhaust and facilities needs
- Low chemical & DIW consumption
- Improved spray uniformity across the wafer and across the load
- Low waste



Low CoO



CLEAN

RCA Cleans
Flux Cleans
Solvent Polymer Cleans
Ozone Post-DRIE Clean
Polymer Removal
Ozone Post-Ash Cleans
Fluoroozone Clean
Post-Dice cleans

ETCH

Metal Etch with Advanced EPD
Sequential UBM Etch
Silicon Etch
Oxide Etch
Glass Etch

RESIST STRIP

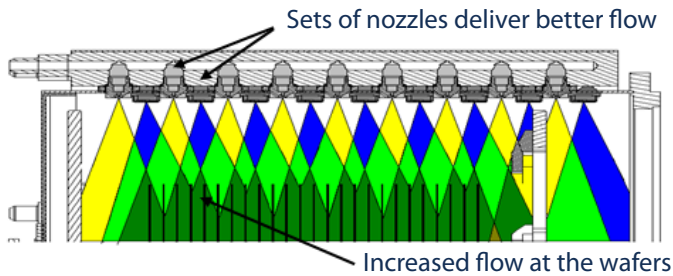
Hydrozone Resist Strip
Hydrozone+ Resist Strip and Particle Clean
Solvent Resist Strip
Sequential Etch Resist Strip



Navigate Tomorrow

Industry Proven SEMITOOL Batch Spray Technology

Fluids Delivered Using Our Enhanced Spray Technology™



Reduced Footprint Optimized for Process Types W x D x H

Single Chamber

4 Tank Version*

SAT

SST / SOT



1143 x 2026 x 2213 mm
45 x 80 x 87 in



1067 x 1835 x 1937 mm
42 x 72 x 76 in

*SST 6 Tank Version Available

Dual Chamber

SAT / SOT

6 Tank Version

SST

7 Tank Version



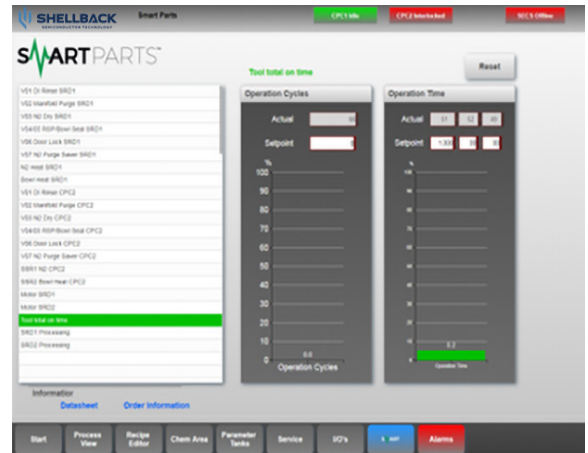
2020 x 2286 x 2273 mm
80 x 90 x 89 in



2546 x 1124 x 2162 mm
100 x 44 x 85 in

SMARTPARTS Predictive Maintenance

- Building system intelligence to drive predictive maintenance and better uptime
- Track key parts against operational usage and manufacturers recommended lifetime
- Download part numbers for easy ordering



Automated Spray Batch Up to 300mm Wafers



Clean ■ Etch ■ Strip

Scan to see more product information



shellbacksemi.com
systems@shellbacksemi.com